

Leading Learning Forward TSA

Annual Partnership Report



Leading Learning Forward

Teaching School Alliance

2017-18

www.leadinglearningforward.org.uk

Published on 1st October 2018

Introduction

I am delighted to share with you the Annual Partnership Report of Leading Learning Forward TSA (2017-18). On the next few pages, you will find details of the work undertaken by LLF partners led by St Hugh's School. St Hugh's is a National Teaching School - *a teaching school is an outstanding school that has a strong track record of collaborative working, and has been designated by the Department for Education to play a key role in the leadership of a teaching school alliance* - working in association with strategic partner organisations including North Lincolnshire Council, Bishop Grosseteste University, Hull University & York St John University and The Humber Teaching School. Our partnership now consists of over 130 partner & associate organisations, schools, colleges & academies across primary, secondary and tertiary stages of education.

We have had another successful year, the fifth full year since the partnership was formed in July 2013, which is clearly evidenced in the following pages of this report. Thank you to everyone who has led, supported or engaged with our work during the past year. We look forward to inspiring even greater achievement in 2017-18.

Tracy Millard, Headteacher, St Hugh's National Teaching School & Chair, Leading Learning Forward TSA

CONTENTS

Leading Learning Forward in 2017-18	3
Strategic Board	3
Alliance Partnership	3
Leading Learning, Leading Achievement	4
Initial Teacher Training (ITT)	4
Professional Learning (CPD)	4
Professional Learning (Leadership Development)	5
Professional Support (School-to-School Support)	5
System Leadership	5
Research & Development (R&D)	6
IMPACT: Key Performance Indicators (KPIs)	6
Financial Summary Report 2017-18	7
BIG 3 Priorities for 2018-19	7
Leading Learning Forward into 2018-19	8

Leading Learning Forward in 2017-18

Leading Learning Forward TSA is a partnership of organisations approved and funded by the Department for Education (DfE) (previously through the National College for Teaching & Leadership) at least until 2019-20. Lead representatives of each partner organisation have signed a statement of commitment within a detailed Memorandum of Understanding. Leading Learning Forward TSA started the 2017-18 school year with over 120 partner and associate organisations, from across North Lincolnshire and beyond, expanding to 134 partner organisations by August 2018. Partnership working was underpinned by a shared vision, values and priorities as the TSA developed and expanded its work. The success of this year's work relied on the significant commitment and confidence of many people and organisations.

Strategic Board

The Strategic Board of LLF TSA, which was formally established in July 2013, met three times in 2017-18 and consisted of leadership representatives from St Hugh's National Teaching School, The Humber Teaching School, North Lincolnshire Local Authority, Bishop Grosseteste University and Hull University, as our Higher Education (HEI) partners, as well as six primary and secondary school headteacher representatives.

During 2017-18, the Board developed further its strategic plans for 2018-20 which will help to maintain the continued reach and impact of the work of the TSA. Moreover, the Board supported and developed a considerable increase in regional partnership work with other schools and Teaching School Alliances across the East Midlands, South Yorkshire and the Humber.

Alliance Partnership

The Alliance Partnership increased to over 130 partner and associate schools and organisations during 2017-18. Partners contributed to the growing expectations and demands of the Alliance by leading projects, writing impact reports, facilitating and delivering professional learning and leadership sessions. Collaborative work included the development of regional Local Area Network meetings. Alliance schools worked in partnership across North Lincolnshire and beyond, achieving increasingly positive outcomes for learners and staff.

PARTNER & ASSOCIATE ENGAGEMENT

Category	2017-18
Teaching Schools (Partner/Associate)	2/5 = 7
Strategic Partners	23
Secondary School Partners	4
Primary School Partners	16
All Associate Schools	84
TOTAL on 31st August 2018	134

Leading Forward Together

▲ SHARED VISION & VALUES

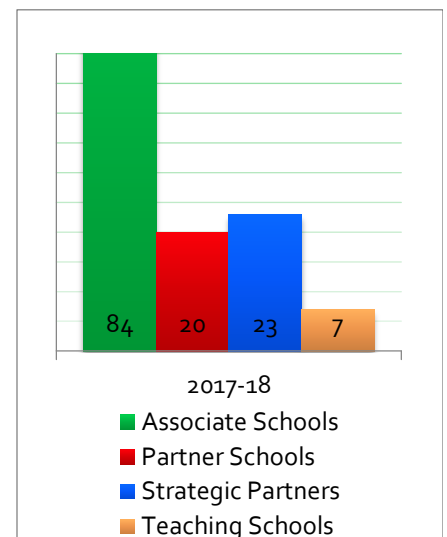
Our vision & values statement for 2017-18 was summed up by the motto, "Leading learning, leading achievement."

▲ SHARED PLANS & PRIORITIES

Our development work in 2017-18 was driven by strategic/operational plans and priorities determined by DfE/NCTL.

▲ SHARED RESPONSIBILITIES

Key roles & responsibilities within the TSA during 2017-18 were distributed between the leaders & staff of our partner organisations.



LLF TSA Partners & Associates

Leading Learning, Leading Achievement

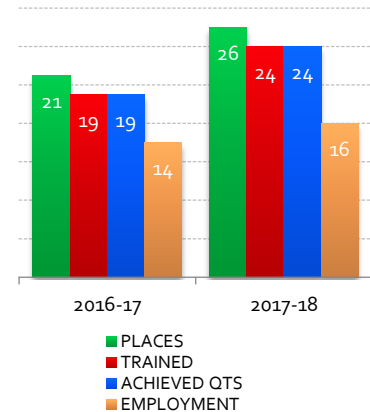
The vision & values statement of Leading Learning Forward TSA, updated by partners in July, drove the work of the Alliance in 2017-18. The next few pages summarise the work undertaken by members of LLF TSA in relation to the eight KPI priorities listed on page 6. Partnership work was focused on driving forward the Big 3 priorities for the benefit of every learner within the remit of the Alliance's work.

Initial Teacher Training (ITT)

During 2017-18, Initial Teacher Training was offered in association with a number of licensed training providers, including North Lincolnshire SCITT Partnership and School Direct training through The Axholme Academy and Hull University. School Direct trainees were attached to a host school for their training. They also spent at least 7 weeks training in a contrasting partnership school. Other ITT courses were also offered leading to the award of PGCE.

IMPACT: Initial Teacher Training partnerships have been successful in promoting, recruiting and selecting trainees, beating regional and national levels. The SCITT & School Direct partnership trained 26 trainees successfully during 2017-18, as reported in the annual return to the Department for Education. Over 60% had achieved employment by 31st August 2018.

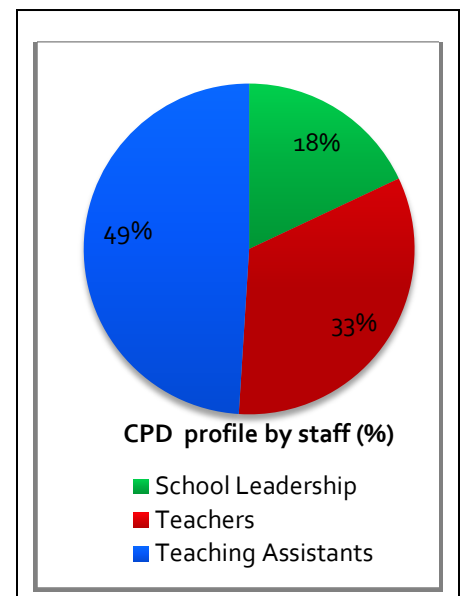
SCITT & School Direct



Professional Learning (CPD)

During 2017-18, the Teaching School Alliance refined its CPD programme for school leaders, teachers, teaching assistants and support staff. A range of different CPD programmes and events were offered, averaging 10 per term. The CPD programme included twilight, half day and full day events through licensed as well as bespoke delivery. Specialist events relating to children with autism, speech and language needs were also provided in association with NHS Children's Therapy Services.

IMPACT: Over 250 delegates attended LLF events in 2017-18. Evaluation scores were very positive with all events consistently rated as good or better. The impact on teaching & learning was endorsed by impact and evaluation reports as well as in a number of recent Ofsted school inspection reports.



CONTINUING PROFESSIONAL DEVELOPMENT EVENTS IN 2017-18

	2017-18
Number of Programmes/Events	29
Number of Event Days	98
Number of Delegates	280

Professional Learning *(Leadership Development)*

During 2017-18, Leading Learning Forward TSA in association with The Humber Teaching School was awarded accredited PQ provider status by the Department for Education (DfE) after a successful application in March 2017 in North and North-East Lincolnshire. The three-year contract was signed in November and the first cohorts started the new courses in January 2018.

IMPACT: Twelve course participants successfully completed the face-to-face middle leadership programme and a further eleven course participants completed the face-to-face senior leadership programme during 2017-18. A significant number of course delegates have moved on to middle and senior leadership positions in their own or other schools with North Lincolnshire and beyond during the year. From September 2018, the National Professional Qualification for Headship course will also be offered.

Professional Support *(School-to-School Support)*

During 2017-18, the Teaching School provided a variety of support to schools across North Lincolnshire, North-East Lincolnshire and the wider region.

IMPACT: The TSA's three-phase offer, which was developed for school leaders, teams, staff and governors, continued to address school improvement priorities within the key Ofsted areas of teaching and learning, achievement, behaviour and safety, leadership and management.

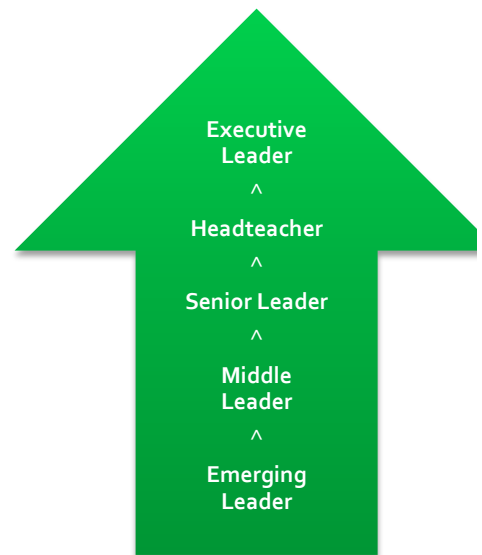
System Leaders in North Lincolnshire 2017-18

Category	2017-18
Specialist Leader of Education (SLE)	22
Local Leader of Education (LLE)	4
National Leader of Education (NLE)	2
National Leader of Governance (NLG)	3

System Leadership *(Leaders of Education)*

During 2017-18, Teaching Schools took on responsibility for the recruitment, induction and deployment of Local Leaders of Education (LLE) as well as Specialist Leaders of Education (SLE). Our talented team of System Leaders has continued to support school leaders, teachers and governors in schools across North Lincolnshire and the region, for the benefit of all learners.

Leadership Development



Accredited NPQ provider

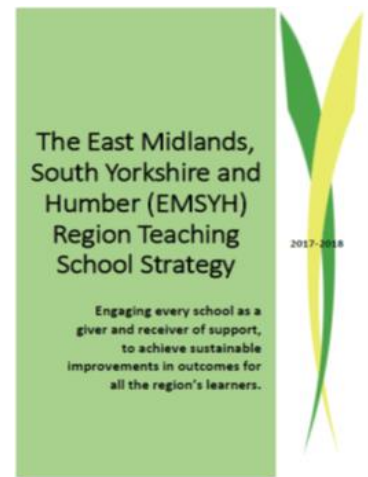


System Leaders: IMPACT

- ▲ SLE & LLE induction training
- ▲ Deployment across region
- ▲ Teaching, learning & leadership
- ▲ Bespoke and licensed training
- ▲ TSA representation in region

Research & Development

During 2017-18, LLF TSA continued to work in association with other Teaching Schools and National Research Schools, including The Humber Teaching School and Huntington School in York. Additionally, the TSA led, supported and contributed to the development of a number of Strategic School Improvement Fund (SSIF) projects across the sub-region.



IMPACT: Key Performance Indicators (KPIs)

Key Performance Indicators	2017-2018
1. Learner Attainment	National Average+
2. School Effectiveness	Good +
3. Quality of Teaching	Good +
4. Quality of Leadership	Good +
5. ITT Trainees Trained	TBC
6. Supply of Leaders	20+
7. Partners & Associates	130+
8. System Leaders Trained & Deployed	20+

“Teaching schools...bring together provision for training and development from initial teacher training (ITT) through to headship under a single school designation. Teaching school alliances...help to:

- ✓ *provide a strong supply of high quality new teachers;*
- ✓ *significantly improve the quality of serving teachers;*
- ✓ *develop great leaders and the next generation of headteachers;*
- ✓ *provide support for schools in need of support.” (DfE)*

In Summary: Leading Learning Forward during 2017-18

During 2017-18, Leading Learning Forward TSA, led by St Hugh’s National Teaching School, promoted and delivered:

- **Initial Teacher Training** and School Direct recruitment/training in partnership with SCITT, schools & HEI providers.
- Almost 100 separate licensed and approved event days for schools covering the BIG 3 areas of **Initial Teacher Training**, **Professional Leadership** and **Professional Support**.
- **National Professional Qualifications (Leadership)** face-to-face courses in association with The Humber Teaching School as DfE accredited NPQ providers.
- **Professional Support** across the area and region, through our experienced team of Leaders of Education.
- **Research & Development** promoted and delivered in close association with National Research Schools.
- Dynamic partnerships with other teaching schools, colleges & academies across North & North-East Lincolnshire as well as across the East Midlands, South Yorkshire & the Humber region.

Financial Grant Report 2017-18

During 2017-18, Leading Learning Forward TSA received £40,000 in grant funding and from the Department for Education to support the development of work across the Teaching School Alliance and beyond.

The Year 5 grant of £40,000 was guaranteed by the Department for Education (DfE), following submission of the annual evaluation report, in accordance with the annual grant funding terms & conditions.

Developing school leadership and learning with high quality training and support continue to be the main drivers for the work of the Teaching School Alliance.



GRANT INCOME

Initial Teacher Training

Teaching School Grant

Total Grant Income

2017-18

TBC

£40,000

£40,000

INCOME SOURCE

School Direct & ITT Grant

DfE/TSC Grant Funding

Total Grant Income

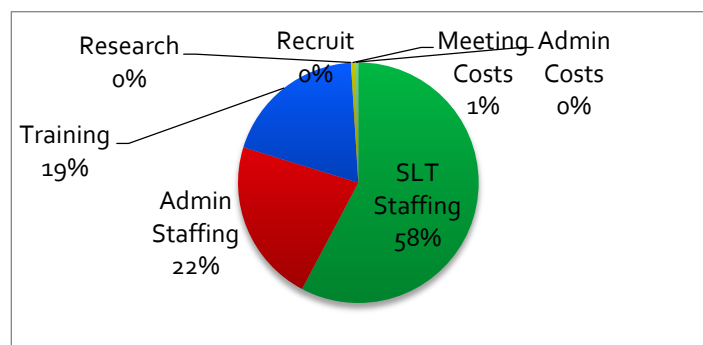
Grant Expenditure 2017-18

During 2017-18, the major area of grant expenditure was Senior Leadership staffing, including partnership work, meetings, training and collaborative work.

Leading Learning Forward TSA, as a non-profit-making alliance, seeks to support and sustain school improvement in North Lincolnshire and beyond through the provision of Initial Teacher Training.

Professional Learning and Professional Support. The table opposite shows how grant expenditure in 2017-18 was broken down by amount and percentage share.

Grant Expenditure: 1st September 2017 to 31st August 2018



GRANT EXPENDITURE

Senior Leadership Staffing

Administrative Staffing

Training & Development

Recruitment Costs

Conference & Meeting Costs

Research Costs

Administrative Costs

Total Grant Expenditure

2017-18

£23,100

£8,802

£7,700

£0

£234

£0

£164

£ 40,000

% SHARE

58%

22%

19%

0%

1%

0%

0%

100%

EXPENDITURE DESCRIPTION

Leadership

Administration

Professional Learning & Support

System Leadership Recruitment

Facilitator Travel & Leadership Meetings

Research Development

Consumables & Resources

Total Annual Expenditure

BIG 3 Priorities for 2018-19

Initial Teacher Training: Teacher Trainee Recruitment & Employment

Professional Learning: Developing Leaders, Teachers & Staff

Professional Support: System Leadership, Supporting Schools

Leading Learning Forward into 2018-19

During 2018-19, Leading Learning Forward TSA, led by St Hugh's National Teaching School, will promote and deliver:

- **Initial Teacher Training** by recruiting, inducting, training and employing teacher trainees through primary and secondary partnerships with North Lincolnshire SCITT, Bishop Grosseteste University, Hull University & York St. John University, The Humber Teaching School and the North Lincolnshire Education Consortium
- A carefully selected programme of licensed and approved **Professional Learning** programmes for schools
- **Professional Learning** in association with a number of partners and licensed providers including the Teaching Schools Council, ELKLAN®, Makaton®, Y&H Maths Hub, Fluent Coaching and The Humber Teaching School
- National Professional Qualifications for School Leadership (NPQ) as a DfE accredited NPQ provider.
- **Professional Support** by developing, recruiting and deploying highly effective System Leaders (LLEs & SLEs)
- Research & Development in close association with our HEI partners & National Research School partners
- Strong collaborative partnerships across North Lincolnshire, North-East Lincolnshire, East Midlands and beyond.

JOIN US

Apply online at:

www.leadinglearningforward.org.uk

LEARN WITH US

Initial Teacher Training

Professional Learning

Professional Support

WORK WITH US

Specialist Leaders of Education

Local Leaders of Education

National Leaders of Education

National Leaders of Governance

TEACHING SCHOOL CONTACTS

STRATEGY

Tracy Millard/David Eaton

Headteacher/Local Area Lead

FINANCE

Sarah-Jayne Briggs

Business Manager

ADMINISTRATION

Catherine Thompson

Administrator